

# MONTHLY MEMBERSHIP PROGRESS REPORT

LOCATION FLORIDA

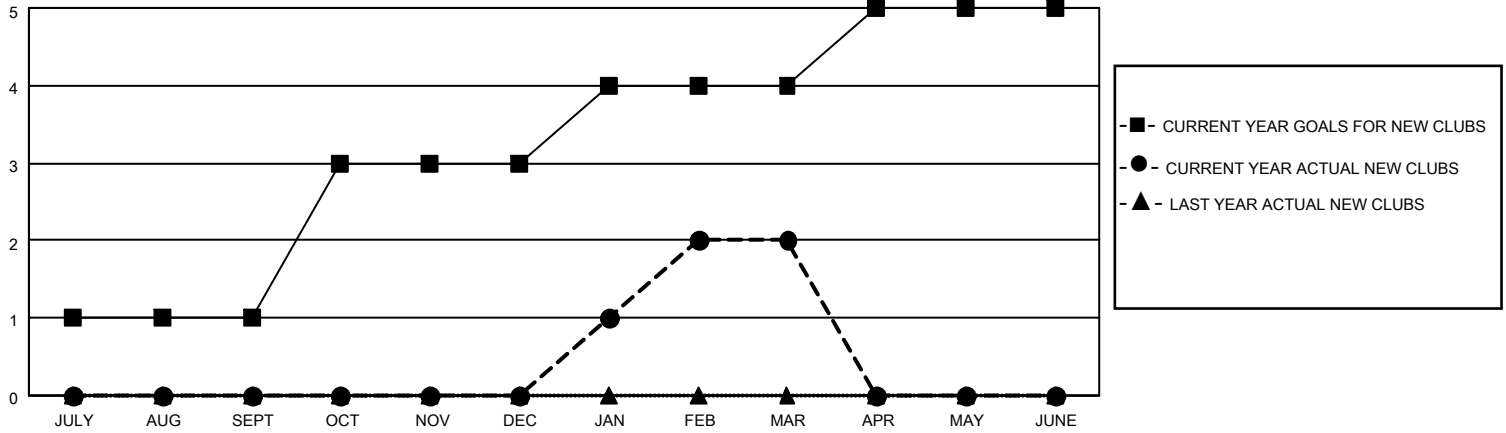
District 35 I

Results as of: 3/31/2022

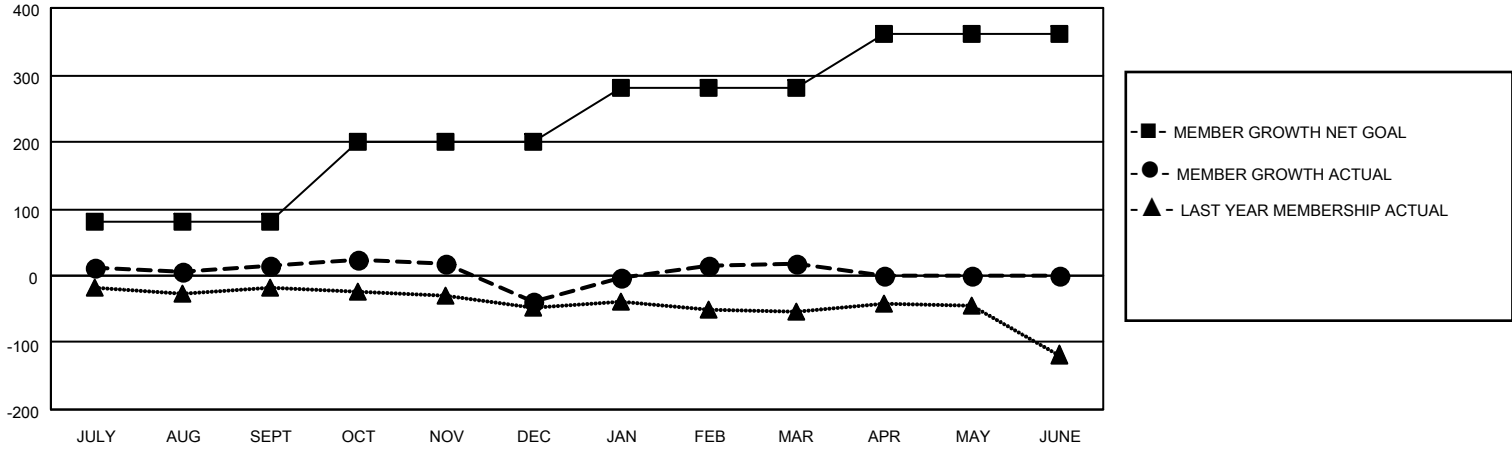
Clubs			
RESULTS FOR 2021-2022			
QUARTER	NEW CLUB GOAL	NEW CLUBS	DROPPED CLUBS
JULY/AUG/SEPT	1	0	0
OCT/NOV/DEC	2	0	2
JAN/FEB/MAR	1	2	1
APR/MAY/JUNE	1	0	0

Members			
RESULTS FOR 2021-2022			
QUARTER	MEMBER GROWTH NET GOAL	MEMBER GROWTH ACTUAL	DROPPED MEMBERS ACTUAL (including transfers)
JULY/AUG/SEPT	80	56	33
OCT/NOV/DEC	120	47	90
JAN/FEB/MAR	80	118	51
APR/MAY/JUNE	80	0	0

**GOALS AND ACTUAL NEW CLUBS CUMULATIVE**



**GOALS AND ACTUAL MEMBERS CUMULATIVE**



**DROPPED CLUBS: 3**

**34 CLUBS OF 48 ADDED 1 OR MORE NEW MEMBERS**

**GENDER DISTRIBUTION**

MALE	603 (51.02%)
FEMALE	579 (48.98%)
NON BINARY	0 (0.00%)
PREFER NOT TO ANSWER	0 (0.00%)

**DROPPED MEMBERS**

[CLICK HERE FOR CUMULATIVE MEMBERSHIP DATA](#)

DECEASED	14
CLUB CANCELLED	35
OTHER	125
<b>TOTAL</b>	<b>174</b>

TOTAL FAMILY UNIT MEMBERS	335
FAMILY MEMBERS PAYING HALF DUES	171